

# DEVELOPING THE INDEPENDENT-MELODIC BASS DRUM

HOLLOWAY

## PART I

BASS DRUM

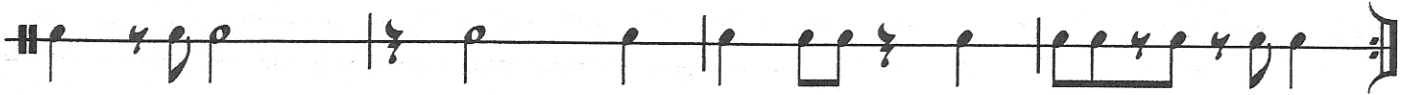
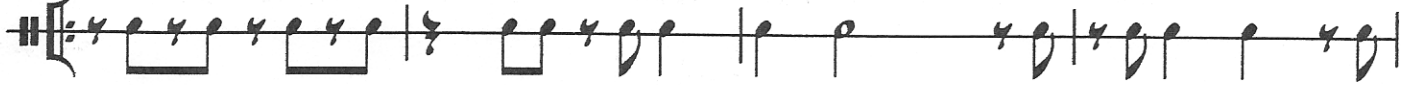
The musical notation consists of six systems, each with a lettered label (A-F) in a box above the first staff. Each system contains two staves of music. The notation uses a treble clef with a double bar line and a common time signature (C). The notes are represented by stems with flags, indicating eighth notes. System A shows a simple eighth-note pattern. System B introduces beamed eighth notes. System C features sixteenth notes. System D uses eighth notes with accents. System E combines eighth notes with accents and beamed eighth notes. System F uses eighth notes with accents and beamed eighth notes.

OPTION-HI-HAT 8THS

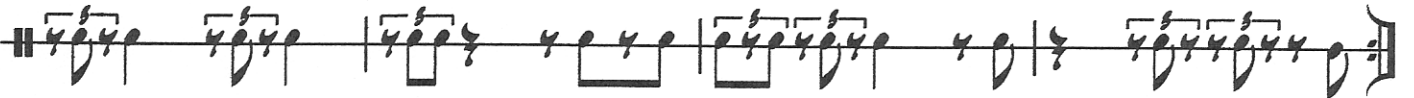
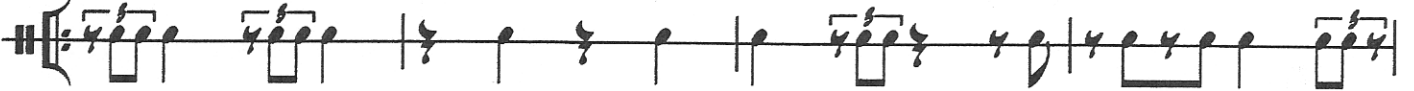
# DEVELOPING THE INDEPENDENT MELODIC BASS DRUM

## PART II

A



B



C

